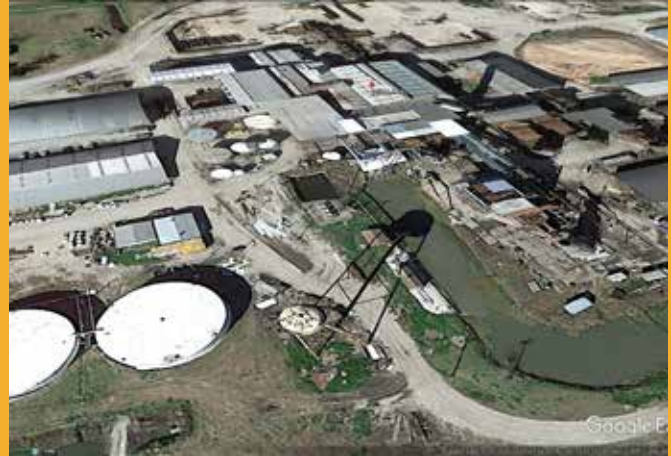


Mechanical Fabrication & Installation

Project Highlight



PROJECT: Piping and spool fabrication as well as installation of support steel and equipment at a demonstration plant which converts bagasse to xylose.

LOCATION: Raceland, Louisiana

WORK SCOPE: Chet Morrison Contractors, LLC provided a wide range of civil and mechanical support services over the span of eight months, including the fabrication, coating and installation of mechanical piping, pipe racks, ducts and flutes, supports and equipment platforms. The company also performed pile driving, modifications, hydro testing, commissioning and civil work. All work was completed on-budget, on-time and incident-free.

SUPPORTED WORK ON THE FOLLOWING:

- ▶ Depleted Bagasse Deep Foundation
- ▶ Depleted Bagasse Concrete Foundation High velocity currents
- ▶ Depleted Bagasse Steel Fabrication and Erection
- ▶ Depleted Bagasse Millwright Equipment Install

When the project experienced potential quality and schedule impacts, Chet Morrison Contractors was engaged to assist with the compressed schedule, including coordinating efforts with multiple contractors on site. Their ability to work nimbly on the project and complete it ahead of schedule made Chet Morrison Contractors a welcome addition.

“Oscar and his whole team were wonderful to work with this last week. They faced several challenges throughout, mainly a tight congested area with multiple groups trying to get work accomplished, but were friendly and agile enough that they figured out how to stay on track, and actually finish ahead of schedule.

They complied with our rules and did not complain. They kept the work area tidy and clean. Every time I observed them they were 100% compliant with PPE. I would welcome any of the guys back to the site in a heartbeat”

NICOLE COFFEE,
Commissioning & Startup Manager at
Stora Enso's Virdia B2X Biomaterials Site